

MCF 3M Opener

Simplify

i) $\frac{3^2 \cdot (2^3)^2}{3(2)^3}$ ii) $3^3 \div 3^{-2}$

iii) $9^{1/2}$ $16^{3/4}$

Apr 28-10:10 AM

MCF 3M Opener

Simplify

i) $\frac{3^2 \cdot (2^3)^2}{3(2)^3}$ ii) $3^3 \div 3^{-2}$

$\frac{3^2 \cdot 2^6}{3 \cdot 2^3} = 3^1 \cdot 2^4$

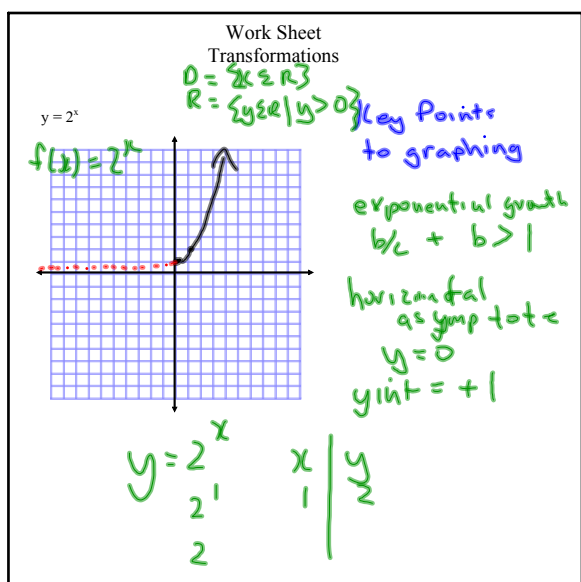
$3^{3-(-2)} = 3^5$

iii) $9^{1/2}$ $16^{3/4}$

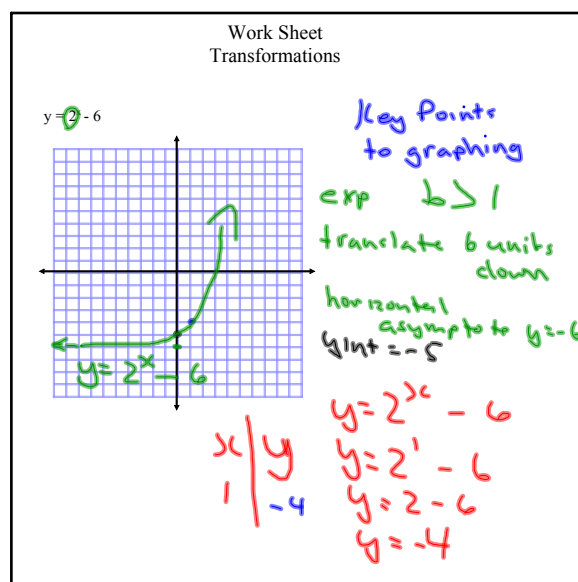
$\sqrt[2]{9} = 3$ $\sqrt[4]{16} = 2$ $\sqrt[2]{32} = (2)^2 \cdot 2^{1/2} = 4 \cdot \sqrt{2}$

$8^{1/2} = \sqrt{8} = 2\sqrt{2}$ $\frac{1}{64}$ $3^{0.5} = 3^{5/10} = 3^{1/2} = \sqrt{3}$

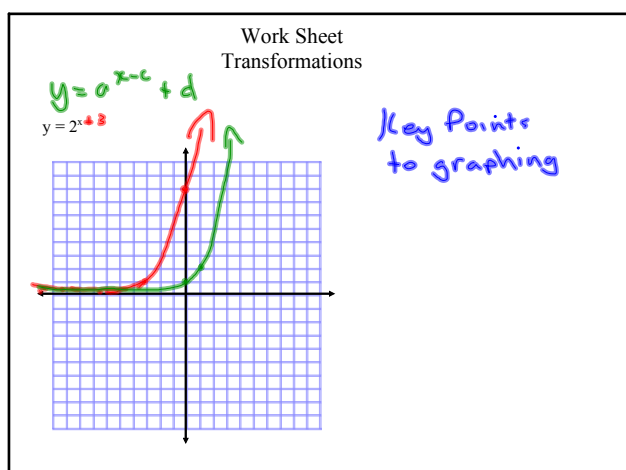
Apr 28-10:10 AM



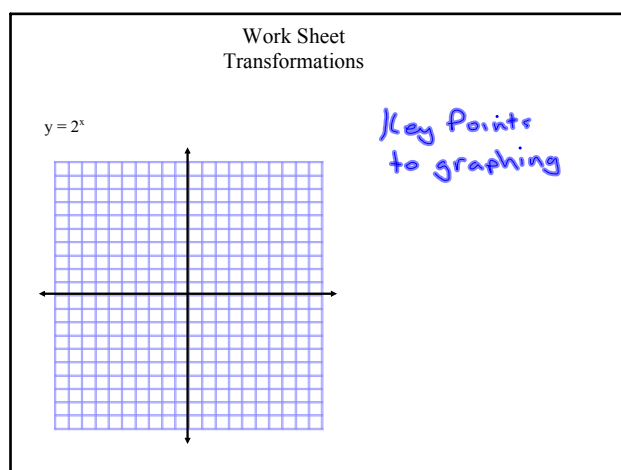
Apr 28-9:43 AM



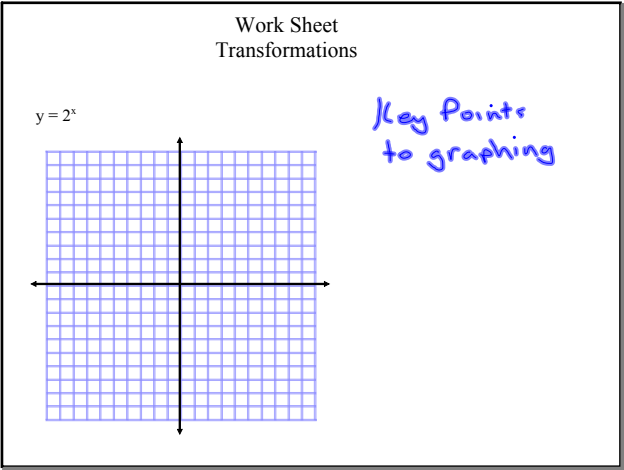
Apr 28-9:43 AM



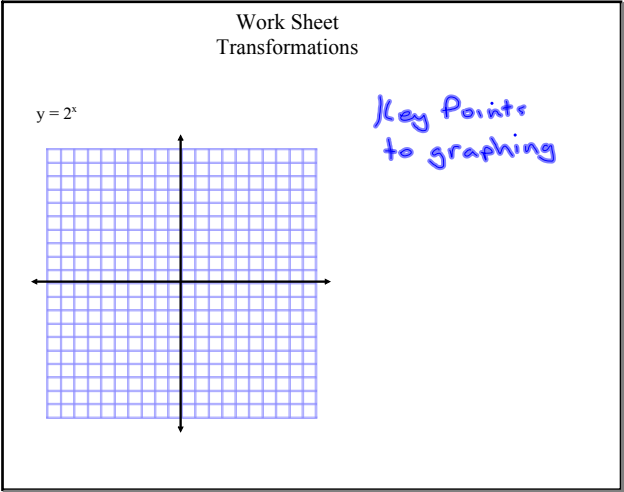
Apr 28-9:43 AM



Apr 28-9:43 AM



Apr 28-9:43 AM



Apr 28-9:43 AM